

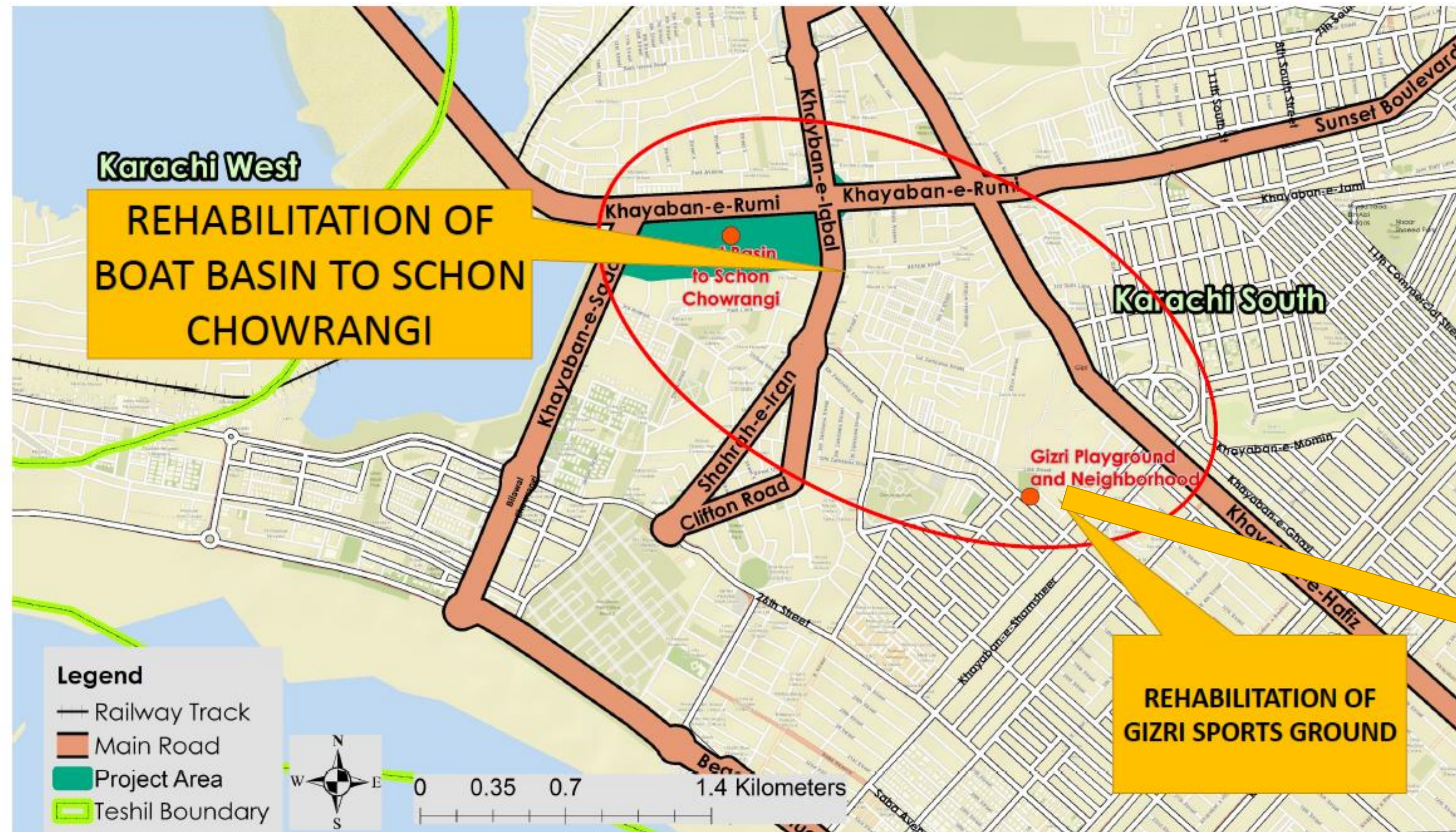


Karachi Neighborhood Improvement Project

REHABILITATION & UPGRADATION OF GIZRI SPORTS GROUND

August 20, 2021

LOCATION MAP



INTERVENTIONS

- Upgradation of Sports Arena, new seating, side walks
- New Pavilion with allied facilities for Players
- Up-gradation of Existing Pavilion .
- Ladies Park/Children's Play Area
- Jogging Tracks & Footpath.
- Tuck Shop with Seating
- Public Toilets Facilities with Universal Accessibility Standards
- Installing street furniture, safety barriers and flood lights.
- Traffic & Parking Improvement Plan.
- Environment Friendly Parking Spaces for staff and visitors
- Designed Seating Areas
- Well Design Landscape
- Burying over head Utilities.
- Footpath & Improved Mobility
- Street Lights & Improved Utility



SPORTS GROUND EXISTING CONDITION



NEIGHBORHOOD EXISTING CONDITION



SPORTS GROUND TRANSFORMATION



SPORTS GROUND TRANSFORMATION



SPORTS GROUND TRANSFORMATION



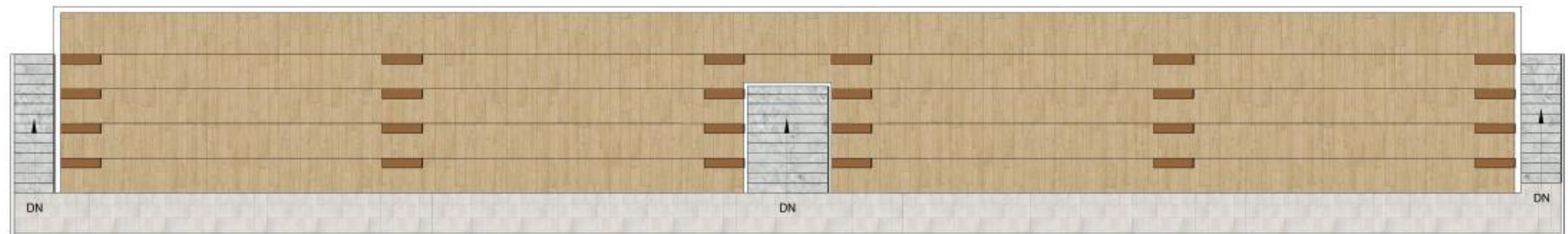
EXISTING STADIA TRANSFORMATION

Salient Features:

- Proper access of players to the ground
- Proper access and exit of visitors
- Male & Female Public Toilets
- Players lounges, lockers & changing rooms
- Offices and referee rooms



LEVEL-1

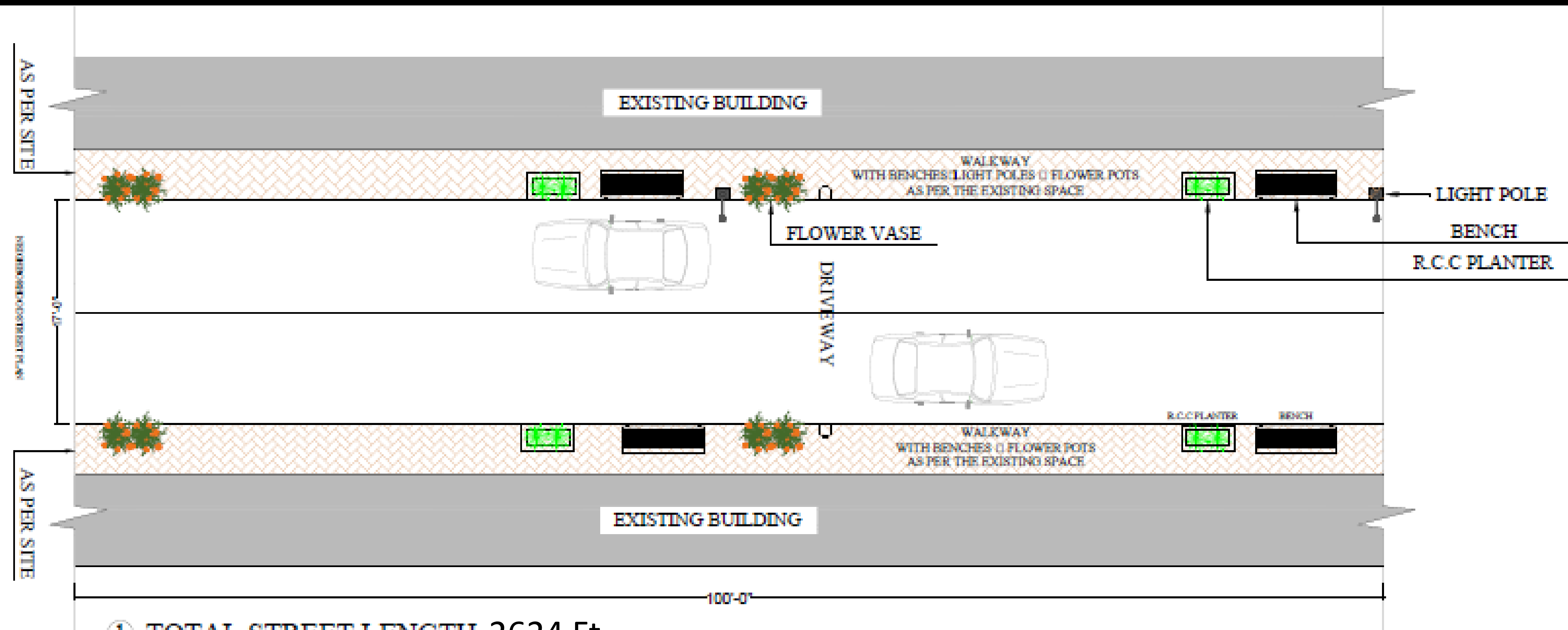


LEVEL-2

EXISTING STADIA TRANSFORMATION

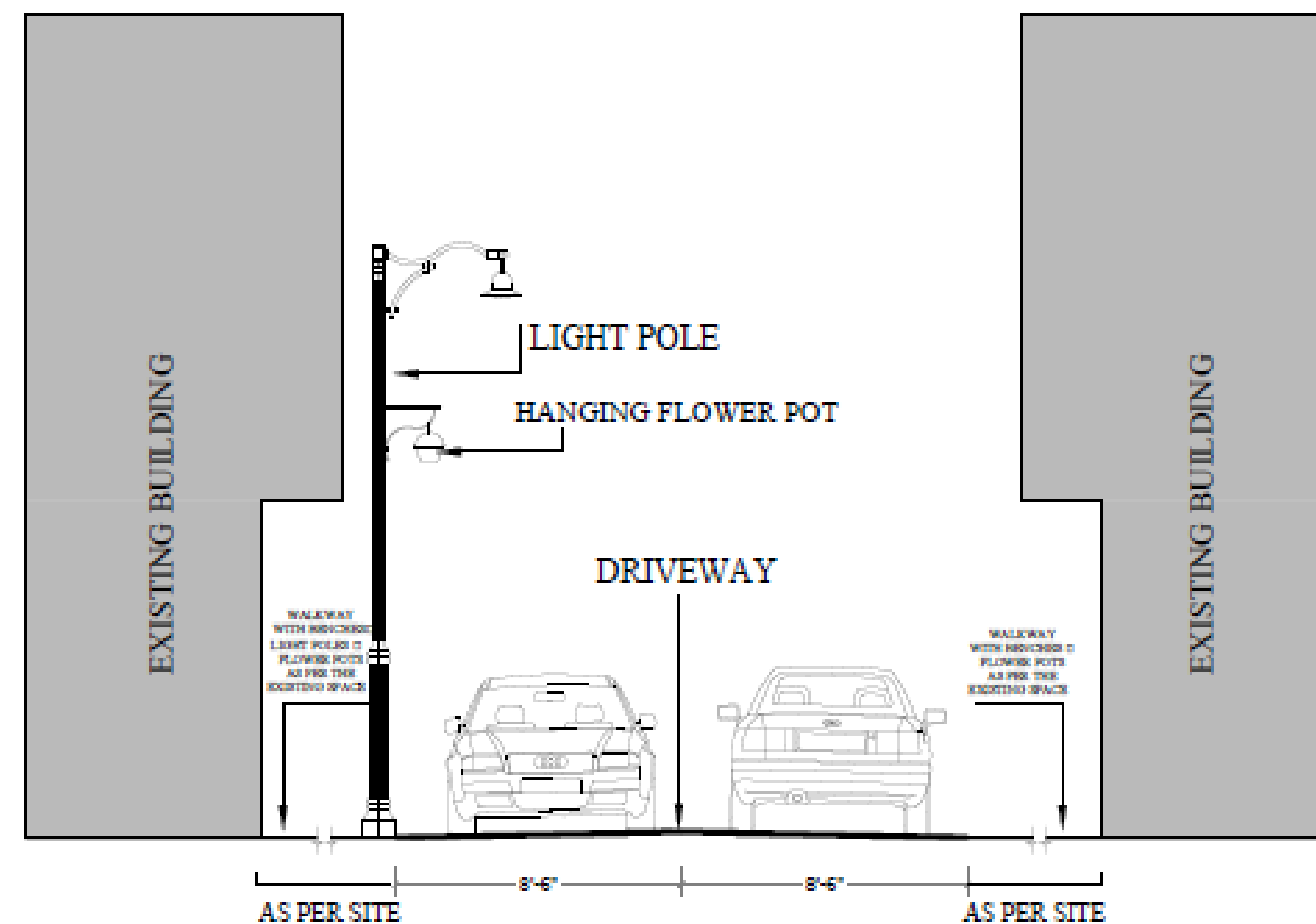


NEIGHBORHOOD STREET TRANSFORMATION



- ① TOTAL STREET LENGTH 2624 Ft
- ② 100 FEET DESIGN PATCH.
- ③ REST OF THE 2524 FEET WILL BE EXTENSION OF THE SAME DESIGN.

PLAN



NEIGHBORHOOD STREET SECTION